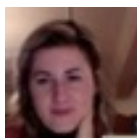
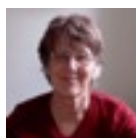


## Living-posters homepage



[Arianna Briganti](#)  
[Sustainable development](#)



[Robyn Pound](#)  
[Alongsideness](#)



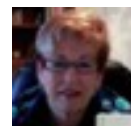
[Jack Whitehead](#)  
[Academic, practitioner](#)  
[educational research](#)



[Marie Huxtable](#)  
[Passion-led](#)  
[learning](#)



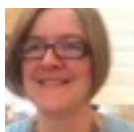
[Liz Campbell](#)  
[Teacher,](#)  
[educational](#)  
[researcher](#)



[Jackie Delong](#)  
[Practitioner-researcher](#)



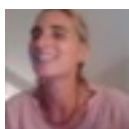
[Sonia Hutchison](#)  
[Sustainable leadership](#)



[Joy Mounter](#)  
[Teacher educator,](#)  
[educational](#)  
[researcher](#)



[Margaret Wadsley](#)  
[Alderian](#)  
[practitioner &](#)  
[supervisor](#)



[Giulia Carozzi -](#)  
[educational](#)  
[researcher](#)



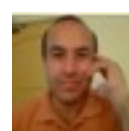
[Paula Shore](#)  
[Headteacher,](#)  
[educational](#)  
[researcher](#)



[Geitza Rebolledo](#)  
[Educational](#)  
[researcher](#)



[Bruce Damons](#)  
[Community](#)  
[development](#)



[Sadruddin Qutoshi](#)  
[Educator & educational](#)  
[researcher](#)



[Caitriona McDonagh](#)  
[Teacher Education](#)



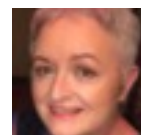
[Swaroop Rawal](#)  
[Teacher education,](#)  
[drama](#)



[Judy McBride](#)  
[Arts-based methods,](#)  
[enquiring together](#)



[Moira Laidlaw](#)  
[Emancipating learners](#)



[Mairin Glenn](#)  
[Teacher Education](#)

Members of the SKYPE  
Living Theory research support  
groups, are based in various countries,  
cultures and fields of practice. As well as  
Living Theory research we each have a variety  
of commitments and interests. What we have in  
common is a commitment to doing what we  
can to contribute to the flourishing of humanity  
and spreading the educational influence of  
Living Theory research as a social  
movement.

## SKYPE Living Theory research support group

There are two groups, one for post-doc researchers and the other for pre-doc researchers. We share our research and provide a safe, critical, supportive context to help each other researching educational practice to improve it and create valid accounts of living-educational-theories. The Skype meetings are weekly and last between 30 and 60 minutes.

**For more information** contact [jack@actionresearch.net](mailto:jack@actionresearch.net) and visit <http://www.actionresearch.net>