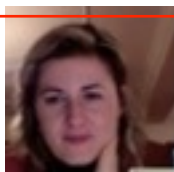
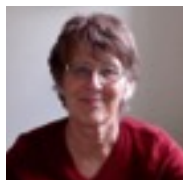


Living-posters homepage



Arianna Briganti
Sustainable development



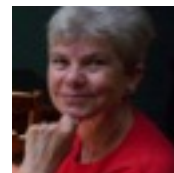
Robyn Pound
Alongsideness, health
visiting provision



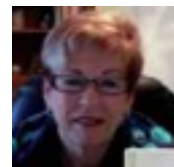
Jack Whitehead
Academic, practitioner
educational research



Marie Huxtable
Passion-led learning



Pip Bruce Ferguson
Staff development



Jackie Delong
Practitioner-researcher



Sonia Hutchison
Sustainable leadership



Per Jensen
Growth mindset, teacher
training



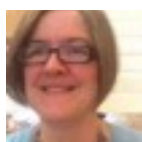
Surrinder
Sandham-Bains
Caring, health visiting
CPD



Teri Young
Teacher education



Liz Campbell
Teacher, educational
researcher



Joy Mounter
Teacher
educator,
educational
researcher



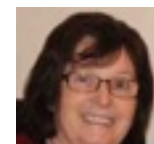
Judy McBride
Arts-based methods,
enquiring together



Bruce Damons
Community
development



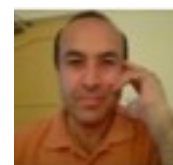
Sarah Haddow
Dance, embodied
knowing



Caitriona McDonagh
Teacher Education



Swaroop Rawal
Teacher education,
drama



Sadruddin Qutoshi
Educator & educational
researcher



Moira Laidlaw
Emancipating learners

Members of the SKYPE
Living Theory research support
groups, are based in various countries,
cultures and fields of practice. As well as
Living Theory research we each have a variety
of commitments and interests. What we have in
common is a commitment to doing what we
can to contribute to the flourishing of humanity
and spreading the educational influence of
Living Theory research as a social
movement.

SKYPE Living Theory research support group

There are two groups, one for post-doc researchers and the other for pre-doc researchers. We share our research and provide a safe, critical, supportive context to help each other researching educational practice to improve it and create valid accounts of living-educational-theories. The Skype meetings are weekly and last between 30 and 60 minutes.

For more information contact jack@actionresearch.net and visit <http://www.actionresearch.net>