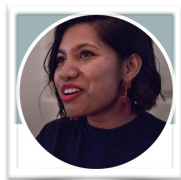




[The Centre for Excellence in Learning and Teaching \(CELT\) at the Durban University of Technology \(DUT\) hosted a webinar on Living Educational Theory. October 2021 - access details here](#)



[Nalini Chitanand](#)



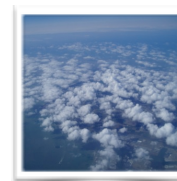
[Adheema Davis](#)



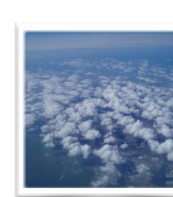
[Akira Sing](#)



[Alain Tschudin](#)



[Andilamathuli Lwazi Ncapai](#)



[Ayesham Mall](#)



[Emmanuel Lawa](#)



[Natassha Koopman](#)



[Nokwanda Biyase](#)



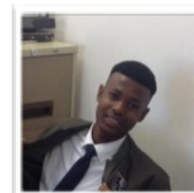
[Wendle Naidoo](#)



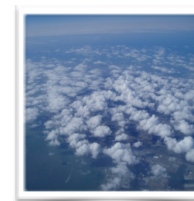
[Tarryn Frankish](#)



[Sithembiso Dyubele](#)



[Phirime Monyeki](#)



[Mary Patience Nkomo](#)

DUT ACADEMIC INDUCTION 2022 PROGRAMME.

At the end the participants were asked to prepare an 8 minute presentations in response to the question, 'How can I improve my practice?'

Access the presentation slides here of:

[Alain Tschudin](#), [Adheema Davis](#), [Emmanuel Lawa](#), [Natassha Koopman](#), [Nokwanda Biyase](#), [Sithembiso Dyumbelen](#) [Wendle Naidoo](#) [Tarryn Frankish](#)

To learn more about the DUT Academic Induction Programme contact
Nalini Chitanand
nalinic@dut.ac.za