

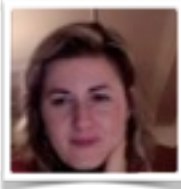
Learning, Education & Development Research Centre

The Learning, Education and Development (LED) research centre focuses on supporting practitioners to develop research-informed practice and on publishing high quality research that has impact on policy and practice.

[Living-posters
homepage](#)

University of Cumbria
Living Theory doctoral
researchers, supervisors &
educational researchers

Members of this Cumbria CPD group, as well as being members of Cumbria University, have various interconnections, for instance through supporting doctoral researchers registered with Cumbria University, and the SKYPE Living Theory research support group.



[Arrianna Briganti](#)



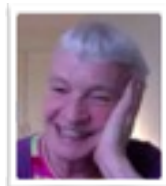
[Margaret Wadsley](#)



[Marie Huxtable](#)



[Sally Elton-Chalcraft](#)



[Moira Laidlaw](#)



[Sonia Hutchison](#)



[Joy Mounter](#)



[Jem Bendell](#)



[Nicoletta Policek](#)



[David Murphy](#)



[Sue Wilbraham](#)



[Linda Kenward](#)

Practitioner Research in Higher Education

This refereed journal is produced by the university's Academic Quality and Development (AQD) service. It was established in order to develop research into reflective practice and to encourage both experienced and early career researchers to share their research with a wider academic audience.

Further information and the ability to search and review current and previous articles is available [here](#).