

What is RIPLE?



The **Research Institute for Professional Learning in Education** is at the heart of the Faculty of Education's research activity. RIPLE offers schools and teachers three ways to engage with research.

RIPLE researchers help teach and supervise dissertations on the MA in Education programme.

Working with schools to support teacher researchers in collaborative projects.

Doctoral supervision for teachers and lecturers looking to gain their PhD.

[Living-posters homepage](#)

University of Cumbria Living Theory doctoral researchers & supervisors

Members of this Cumbria CPD group, as well as being members of Cumbria University, have various interconnections, for instance through supporting doctoral researchers registered with Cumbria University, and the SKYPE Living Theory research support group.



[Pete Boyd](#)



[Jack Whitehead](#)



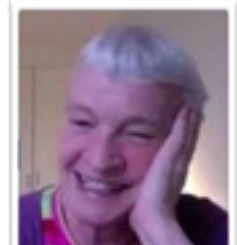
[Barry Hymer](#)



[Paul Cammack](#)



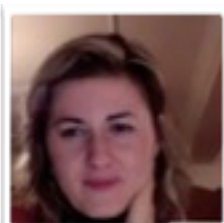
[Sally Elton-Chalcraft](#)



[Moira Laidlaw](#)



[Sonia Hutchison](#)



[Arrianna Briganti](#)



[Joy Mounter](#)



[Marie Huxtable](#)



[David Murphy](#)

Practitioner Research in Higher Education

This refereed journal is produced by the university's Academic Quality and Development (AQD) service. It was established in order to develop research into reflective practice and to encourage both experienced and early career researchers to share their research with a wider academic audience.

Further information and the ability to search and review current and previous articles is available [here](#).