

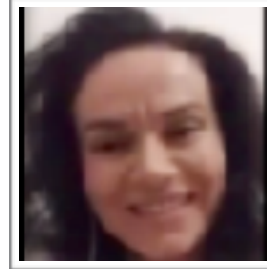
Use 'back key'  
to return to  
living-posters  
home page



[Margaret Wadsley](#)  
[Adlerian psychotherapist & Supervisor](#)



[Rosemary White](#)  
[Adlerian Psychotherapist,](#)  
[Supervisor, Developing](#)  
[Community](#)



[Carmen Tamas Adlerian](#)  
[Psychologist Clinical](#)  
[Psychologist ABA](#)  
[Therapist](#)



[Sonia Hutchison](#)  
[Sustainable](#)  
[leadership](#)



[Robyn Pound](#)  
[Alongsideness](#)  
[Adlerian practitioner](#)



**[Click here to](#)**  
**[go to directory](#)**  
**[and archive](#)**

## Adlerian Skype group

The group meets weekly on Skype to discuss each of our enquiries about using Adlerian psychology in our fields of practice by:

- Collating evidence for diploma, IIP accreditation and BACP accreditation.
- Evaluating and explaining our supervisory practice
- Practitioners wishing to understand, improve, evaluate + explain their practice.
- Exploring questions such as, 'How do I use Adlerian psychology in my life?'
- Collecting evidence to show how our Adlerian practice is effective'
- Exploring, 'How do I introduce Adlerian psychology in my workplace?'
- Researching for academic accreditation towards a higher degree.