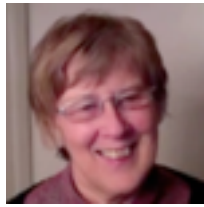




[Jack Whitehead](#)
[Academic & practitioner educational research](#)



[Robyn Pound](#)
[Alongsideness, health visiting provision](#)



[William House](#)
[Community action, holistic medicine](#)



[Chris Jones](#)
[Empowering leadership, inclusion](#)



[Nigel Harrison](#)
[Authentic leadership, school practice](#)

CONVERSATION CAFE



[Lynn Spurrell](#)
[Coaching, change management](#)



[Marie Huxtable](#)
[Passion-led learning](#)

The Conversation Cafe research support group has been meeting early in the morning weekly for many years at venues in and around Bath, UK. Members have joined, left and returned as their personal and work circumstances have changed. Whoever has been part of these conversations have helped to create a consistently vibrant, convivial, and energising space for sharing and supporting our individual and collective efforts to contribute to the flourishing of humanity by researching our practice to improve it and offer valid accounts of our explanations of our educational influence in our own learning, the learning of others and the learning of the social formations we are part of (our living-educational-theories)



[Sonia Hutchison](#)
[Sustainable leadership](#)



[Andrew Henon](#)
[Socially engaged art](#)



[Kate Kemp](#)
[Listening, loving, laughing, living](#)



[Shelagh Hetreed](#)
[Scarred identities, marginalised communities](#)



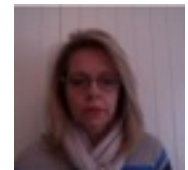
[Joao Roe](#)
[Children with sensory impairment](#)



[Deborah Jane Love](#)
[justice, lifelong learning](#)



[Surrinder Sandham-Bains](#)
[Carer, health visiting, CPD](#)



[Rachel Bruggess](#)
[wellbeing into elderhood](#)

Members of the Conversation

Cafe research group, some of whom you can see above, share a common passion to contribute to the flourishing of humanity through researching our practice to improve it, making public valid accounts of our living-theories and spreading knowledge of the transformational and life-affirming and life-enhancing possibilities Living Theory research offers.



Text

Jack Whitehead's use of the metaphor of the celebratory bowl in his meaning of community

For Andy Henon's description of the celebratory bowl click on the bowl or here