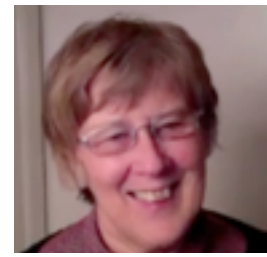




[Jack Whitehead](#)
[Academic & practitioner](#)
[educational research](#)



[Marie Huxtable](#)
[Passion-led learning](#)



[Robyn Pound](#)
[Alongsideness, health](#)
[visiting provision](#)



[Per Jensen](#)
[Growth mindset,](#)
[teacher training](#)

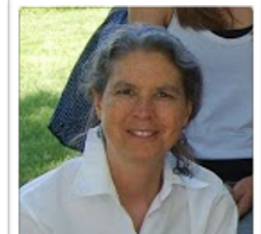
Members of this SKYPE Living Theory research support group, are based in various countries, cultures and fields of practice. We have various interconnections, for instance some are supervising doctoral researchers registered with Cumbria University, some are members of the Conversation Cafe research group, some have formed connections 'off piste'. As well as Living Theory research we each have a variety of commitments and interests. What we have in common is a commitment to doing what we can to contribute to the flourishing of humanity and spreading the educational influence of Living Theory research.



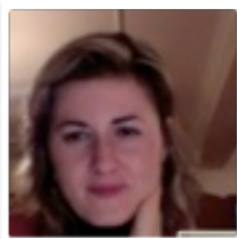
[Surrinder Sandham-Bains](#)
[Caring, health visiting CPD](#)



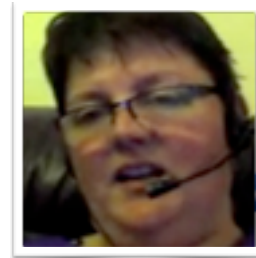
[Sonia Hutchison](#)
[Sustainable leadership](#)



[Teri Young](#)
[Teacher education](#)



[Arianna Briganti](#)
[Sustainable development](#)



[Tammy Nicholls](#)
 disadvantage, classroom practice

SKYPE Living Theory research support group

There is a weekly SKYPE group meeting and various email exchanges in between. We share our research and provide a safe, critical, supportive context to help each other improve our practice and create valid accounts of our explanations of our educational influence in our own learning, the learning of others and the learning of the social formations within which we live and work. Some members of the [University of Cumbria Living Theory research group](#) do not directly participate and not all members are able to join every meeting and take part in all the email exchanges but none-the-less their presence and contributions are always valued and valuable and new, productive working relationships are continually emerging.