

UNIVERSITY OF CUMBRIA

LIVING THEORY RESEARCH GROUP

Members of this Living Theory research group, as well as being members of the University of Cumbria, have various interconnections, for instance through those registered on the doctoral researcher programme, engaging with RIPLE and the [SKYPE Living Theory research support group](#).

www.cumbria.ac.uk/riple

What is RIPLE?



The **Research Institute for Professional Learning in Education** is at the heart of the Faculty of Education's research activity. RIPLE offers schools and teachers three ways to engage with research.

RIPLE researchers help teach and supervise dissertations on the MA in Education programme.

Working with schools to support teacher researchers in collaborative projects.

Doctoral supervision for teachers and lecturers looking to gain their PhD.

Practitioner Research in Higher Education

This refereed journal was established in order to develop research into reflective practice and to encourage both experienced and early career researchers to share their research with a wider academic audience.



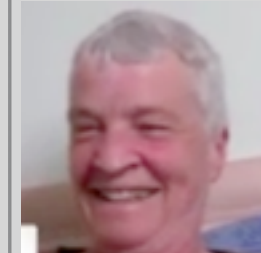
[Pete Boyd](#)
[Professional learning](#)



[Barry Hymer](#)
[Psychology,](#)
[classroom practice](#)



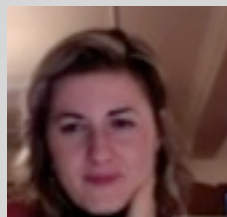
[Jack Whitehead](#)
[Academic & practitioner](#)
[educational research](#)



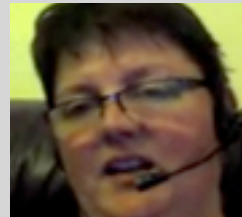
[Moira Laidlaw](#)
[Emancipating](#)
[learners](#)



[Sonia Hutchison](#)
[Sustainable](#)
[leadership](#)



[Arianna Briganti](#)
[Sustainable](#)
[development](#)



Tammy Nicholls
Disadvantage,
classroom practice



[Marie Huxtable](#)
[Passion-led learning](#)



[David Murphy](#)
[International](#)
[leadership](#)