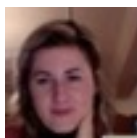
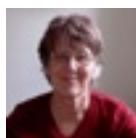


**Living-posters  
homepage**



[Arianna Briganti](#)  
[Sustainable development](#)



[Robyn Pound](#)  
[Alongsideness](#)



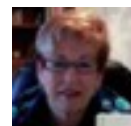
[Jack Whitehead](#)  
[Academic, practitioner](#)  
[educational research](#)



[Marie Huxtable](#)  
[Passion-led learning](#)



[Pip Bruce Ferguson](#)  
[Staff development](#)



[Jackie Delong](#)  
[Practitioner-researcher](#)



[Sonia Hutchison](#)  
[Sustainable leadership](#)



[Per Jensen](#)  
[Growth mindset, teacher](#)  
[training](#)



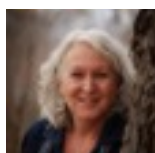
[Surrinder Sandham-Bains](#)  
[Caring, health visiting](#)  
[CPD](#)



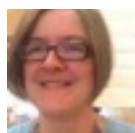
[Jason Hocknell-Nickels](#)  
[Educational researcher](#)



[Sarah Haddow](#)  
[Dance, embodied](#)  
[knowing](#)



[Liz Campbell](#)  
[Teacher, educational](#)  
[researcher](#)



[Joy Mounter](#)  
[Teacher](#)  
[educator,](#)  
[educational](#)  
[researcher](#)



[Paula Shore](#)  
[Headteacher,](#)  
[educational](#)  
[researcher](#)



[Bruce Damons](#)  
[Community](#)  
[development](#)



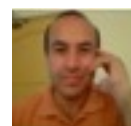
[Judy McBride](#)  
[Arts-based](#)  
[methods,](#)  
[enquiring together](#)



[Geitza Rebolledo](#)  
[Educational](#)  
[researcher](#)



[Swaroop Rawal](#)  
[Teacher education,](#)  
[drama](#)



[Sadruddin Qutoshi](#)  
[Educator & educational](#)  
[researcher](#)



[Moira Laidlaw](#)  
[Emancipating learners](#)



[Caitriona McDonagh](#)  
[Teacher Education](#)

Members of the SKYPE  
Living Theory research support  
groups, are based in various countries,  
cultures and fields of practice. As well as  
Living Theory research we each have a variety  
of commitments and interests. What we have in  
common is a commitment to doing what we  
can to contribute to the flourishing of humanity  
and spreading the educational influence of  
Living Theory research as a social  
movement.

**SKYPE Living Theory research support group**

There are two groups, one for post-doc researchers and the other for pre-doc researchers. We share our research and provide a safe, critical, supportive context to help each other researching educational practice to improve it and create valid accounts of living-educational-theories. The Skype meetings are weekly and last between 30 and 60 minutes.

**For more information** contact [jack@actionresearch.net](mailto:jack@actionresearch.net) and visit <http://www.actionresearch.net>