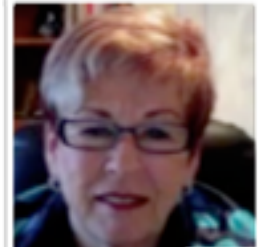




Cathy Griffin



Liz Campbell



Jackie Delong



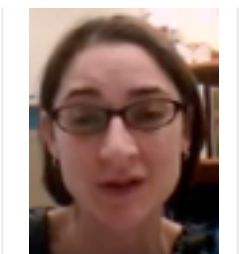
Kelly Hanson



Sabre Cherkowski

The project's purpose is to create meaningful, relevant, authentic & sustainable professional development for practitioners that can be directly transferred to the classroom to create similar learning opportunities for students.

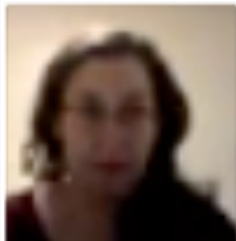
We use action-reflection & data-driven self-directed inquiry in a collaborative community. Members are supported by facilitators and peers through their research project. Each participant presents the results of their research at a Bluewater Action Research Network Symposium in the spring.



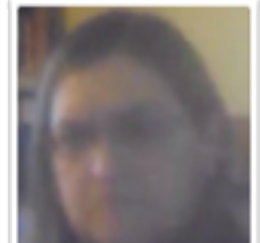
Michelle Cunningham



Avis Daigarno



Krystal Damm



Cathryn Smith

# BLUE WATER ACTION RESEARCH NETWORK

## BARN