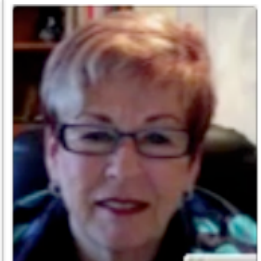




[Cathy Griffin](#)



[Liz Campbell](#)



[Jackie Delong](#)



[Kelly Hanson](#)

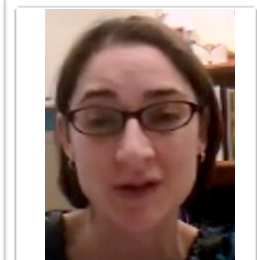


[Sabre Cherkowski](#)

We are a group of educational researchers working in Ontario, Canada.

Our purpose is to create meaningful, relevant, authentic and sustainable professional development for practitioners that can be directly transferred to the classroom to create similar learning opportunities for students. We use action-reflection and data-driven self-directed inquiry in a collaborative community.

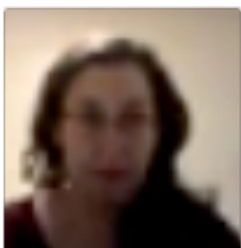
Some of our members were part of the ARNA planning group, some are here and have posters. Find out more from their poster and by visiting [our virtual mentor spaces](#).



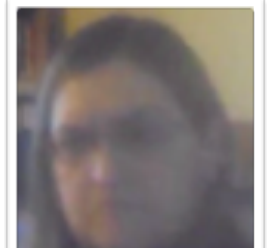
[Michelle Cunningham](#)



[Avis Daigarno](#)



[Krystal Damm](#)



[Cathryn Smith](#)

BLUE WATER ACTION RESEARCH NETWORK

BARN